



QuietRock[®] 525

Score
Snap
Hang



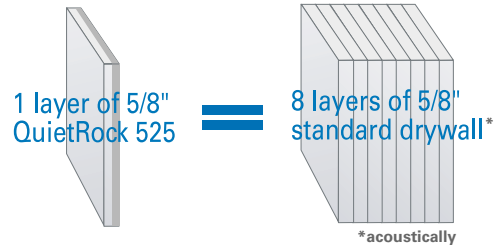
Easiest way to meet code for multi-family party walls

QuietRock 525 soundproof drywall provides a simple, reliable, low-cost way to meet building code for multi-family party wall construction, as well as excellent performance for residential and commercial construction. A single sheet of QuietRock 525 on one side of single wood studs exceeds code for STC ratings – which lets you eliminate the added material and labor cost for double-stud construction, and gain more sellable floor space.

QuietRock 525 Benefits

- Provides superior noise reduction at a lower total installed cost than other soundproofing methods
- Delivers STC ratings of 51-72
- Fire rating equivalent to Type X drywall
- Installs like regular drywall simply score, snap and hang
- Non-metallic composition
- Continues to reduce noise even when fixtures are installed, such as shelves or lamps
- Only 5/8" thick
- Outperforms other soundproofing methods, including soundboard and resilient channel
- Environmentally friendly, lab tested
- Worldwide patents pending

One Equals Eight™



STC Comparison*

5/8" gypsum	34
Cinderblock	38
Soundboard	42
Mass loaded vinyl	43

QuietRock 525 **51-72**

*in standard wood construction

Product Specifications




Model:	QuietRock 525
Thickness:	5/8"
Weight:	2.7 lbs/sqft
STC-rated:	51-72 (ASTM E90)
Fire-rated:	1 hour
Surface flame:	Class A (ASTM E84)
R value:	0.5

Product Ordering Codes

4' x 8' panel:	QR525STD4X8
4' x 9' panel:	QR525STD4X9
4' x 10' panel:	QR525STD4X10
4' x 12' panel:	QR525STD4X12

Applications

- Multi-family
- Party walls
- Commercial
- Hotels
- Schools
- Offices
- Hospitals
- Home theaters
- Conference rooms

Model	Description	Thickness	STC	Fire Rating	Features	Applications
510	Solid performance with lowest cost - great value	1/2"	49-68	Not rated	Lowest cost, score/snap/hang, lightest weight, no metal	Remodeling and upgrades
525	Fire-rated, score and snap	5/8"	51-72	 (expected, early 2007)	Score/snap/hang, direct soundproof replacement for Type X, no metal	Multifamily, home theaters, hotels, hospitals, commercial
530	Higher performance for retrofits plus shear resistance	5/8"	52-74		Shear/impact-resistant, mold-resistant (optional), pre-primed (optional), penetration	Multifamily, commercial, hospitals, hotels, schools, high-end home theaters, hallways
530RF	Adds RF shielding	5/8"	52-74		Designed for RF and noise shielding	SCIF rooms and medical shielding
545THX	Highest performance	1-3/8"	56-80	2 hours (estimated)	The only THX™ certified drywall, superior sound isolation, even at 50 Hz	High-end home theaters, commercial theaters, studios

*Suggested retail price for a 4' x 8' panel

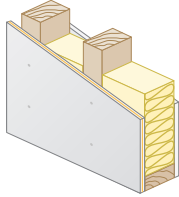


Score
Snap
Hang

QuietRock® 525

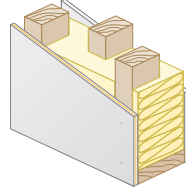
Lowest-Cost Solutions in the Market

Lowest Cost Wall
QuietRock on one side



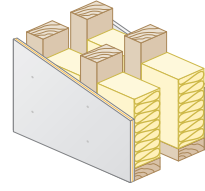
STC: 51 - Fire: 1 Hour

Staggered Stud Wall
QuietRock on one side



STC: 56 - Fire: 1 Hour

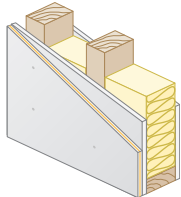
Double Stud Wall
QuietRock on one side



STC: 61 - Fire: 1 Hour

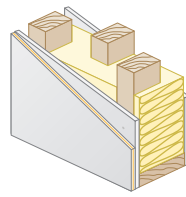
Retrofit and Remodeling

Single Stud Wall
QuietRock on one side of existing drywall



STC: 49 - Fire: 1 Hour

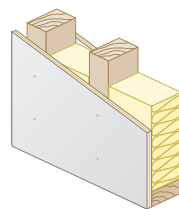
Staggered Stud Wall
QuietRock on one side of existing drywall



STC: 57 - Fire: 1 Hour

High Performance

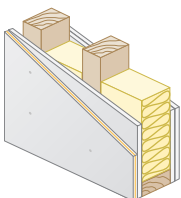
Single Stud Wall
QuietRock on both sides



STC: 55 - Fire: 1 Hour

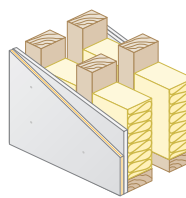
2 Hour Fire Walls

Single Stud Wall
QuietRock on one side, 2 layers of regular drywall on one side



STC: 54 - Fire: 2 Hour

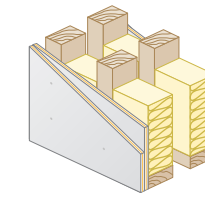
Double Stud Wall
QuietRock on one side, 2 layers of regular drywall on one side



STC: 70 - Fire: 2 Hour

High Performance

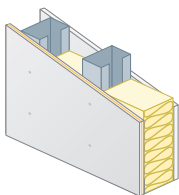
Double Stud Wall
Double layer of QuietRock on both sides



STC: 72 - Fire: 2 Hour

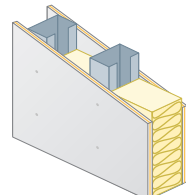
Steel - Single layer assemblies with fire ratings and noise reduction

Lowest Cost Wall
QuietRock on one side



STC: 55 - Fire: 1 Hour

Double Wall
QuietRock on both sides



STC: 57 - Fire: 1 Hour

Applications

- Multi-family
- Party walls
- Commercial
- Hotels
- Schools
- Offices
- Hospitals
- Home theaters
- Conference rooms