



QuietRock[®] 530



Superb sound performance plus shear resistance

QuietRock 530 is a versatile, high performance drywall panel that delivers superb noise reduction. This 'superpanel' is UL fire-rated, STC-rated, shear-rated, impact-resistant, and optionally mold-resistant and pre-primed.

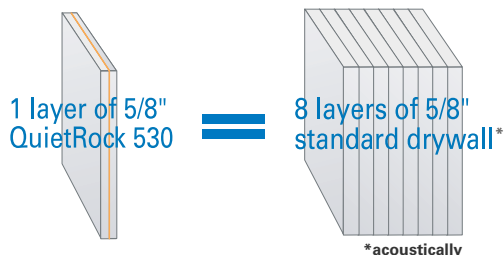
QuietRock 530 Benefits

- Delivers STC ratings of 52-74
- Fire rating equivalent to Type X drywall; UL fire-rated
- Shear-rated
- Mold resistance and pre-priming available as options
- Hangs and finishes like standard drywall
- QuietRock 530RF available for RF and noise shielding (*standard 530 does not provide RF shielding*)
- Continues to reduce noise even when fixtures are installed, such as shelves or lamps
- Only 5/8" thick
- Outperforms other soundproofing methods, including soundboard and resilient channel
- Environmentally friendly, lab tested
- Worldwide patents pending

Product Specifications

Model:	QuietRock 530
Thickness:	5/8"
Tolerance:	Min - 0.510", Max - 0.635"
Weight:	2.8 lbs/sqft
STC-rated:	52-74 (ASTM E90)
Fire-rated:	1 hour, Type X equivalent
UL-rated assemblies:	U305, U309, U340, U341, U376
Shear value:	487 lb/ft (ASTM E2126)
Surface flame:	Class A (ASTM E84)
Permeability:	0
R value:	0.38

One Equals Eight™



STC Comparison*

5/8" gypsum	34
Cinderblock	38
Soundboard	42
Mass loaded vinyl	43

QuietRock 530 **52-74**

*in standard wood construction

Product Ordering Codes




4' x 8' panel:	QR530STD4X8
4' x 9' panel:	QR530STD4X9
4' x 10' panel:	QR530STD4X10
4' x 12' panel:	QR530STD4X12
4' x 8' Greenboard:	QR530GRN4X8*

* Greenboard product is 7/8" thick

Mold resistance and pre-priming are optional features on QuietRock 530.

Applications

- Multi-family
- Commercial
- Hospitals
- Hotels
- Schools
- Home theaters
- Media rooms
- Recording studios
- Party walls

Model	Description	Thickness	STC	Fire Rating	Features	Applications
510	Solid performance with lowest cost - great value	1/2"	49-68	Not rated	Lowest cost, score/snap/hang, lightest weight, no metal,	Remodeling and upgrades
525	Fire-rated, score and snap	5/8"	51-72	 <small>(expected, early 2007)</small>	Score/snap/hang, direct soundproof replacement for Type X, no metal	Multifamily, home theaters, hotels, hospitals, commercial
530	Higher performance for retrofits plus shear resistance	5/8"	52-74		Shear/impact-resistant, mold-resistant (optional), pre-primed (optional), penetration	Multifamily, commercial, hospitals, hotels, schools, high-end home theaters, hallways
530RF	Adds RF shielding	5/8"	52-74		Designed for RF and noise shielding	SCIF rooms and medical shielding
545THX	Highest performance	1-3/8"	56-80	2 hours (estimated)	The only THX™ certified drywall, superior sound isolation, even at 50 Hz	High-end home theaters, commercial theaters, studios

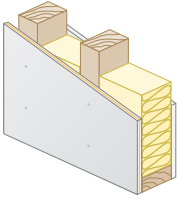
*For volume purchases. See your local dealer for details.
STCs shown are on 24" wood studs.



QuietRock[®] 530

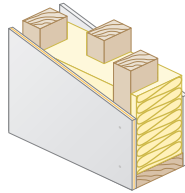
Lowest-Cost Solutions in the Market

Lowest Cost Wall
QuietRock on one side



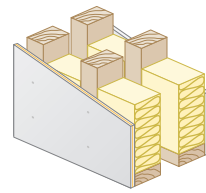
STC: 52 - Fire: 1 Hour

Staggered Stud Wall
QuietRock on one side



STC: 58 - Fire: 1 Hour

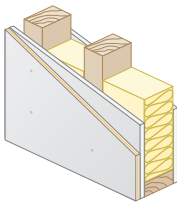
Double Stud Wall
QuietRock on one side



STC: 63 - Fire: 1 Hour

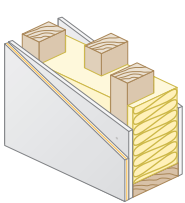
Retrofit and Remodeling

Single Stud Wall
QuietRock on one side of existing drywall



STC: 53 - Fire: 1 Hour

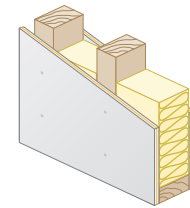
Staggered Stud Wall
QuietRock on one side of existing drywall



STC: 59 - Fire: 1 Hour

High Performance

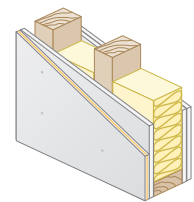
Single Stud Wall
QuietRock on both sides



STC: 54 - Fire: 1 Hour

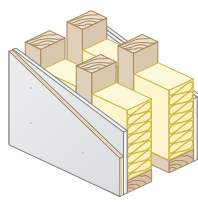
2 Hour Fire Walls

Single Stud Wall
QuietRock on one side, 2 layers of regular drywall on one side



STC: 56 - Fire: 2 Hour

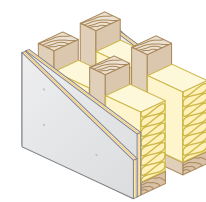
Double Stud Wall
QuietRock on one side, 2 layers of regular drywall on one side



STC: 72 - Fire: 2 Hour

High Performance

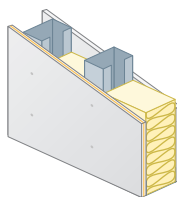
Double Stud Wall
Double layer of QuietRock on both sides



STC: 74 - Fire: 2 Hour

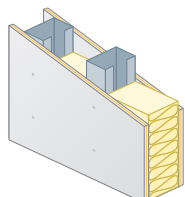
Steel - Single layer assemblies with fire ratings and noise reduction

Lowest Cost Wall
QuietRock on one side



STC: 53 - Fire: 1 Hour

Single Stud Wall
QuietRock on both sides



STC: 55 - Fire: 1 Hour

Applications

- Multi-family
- Commercial
- Hospitals
- Hotels
- Schools
- Home theaters
- Media rooms
- Recording studios
- Party walls

STCs shown are on 24" wood studs.