



## The world's only THX-certified panel

QuietRock 545THX is the only THX-certified soundproofing wall and ceiling panel designed to meet the high-end requirements of commercial theaters, recording studios and home theaters. QuietRock 545THX delivers superior sound isolation within demanding media and privacy environments, even at 50 Hz.

### QuietRock 545THX Benefits

- Highest performing wall panel in the world
- Delivers STC ratings of 56-80
- Highest total loss factor across all frequencies from low to high
- Hangs and finishes like standard drywall
- Outperforms older technologies such as mass loaded vinyl by 60-90%
- Low frequency isolation up to 50dB; high frequency up to 90dB
- Environmentally friendly, lab tested
- Worldwide patents pending



Patent-pending 11-layer ceramic-polymer-gypsum (CPG) composite provides maximum noise reduction.

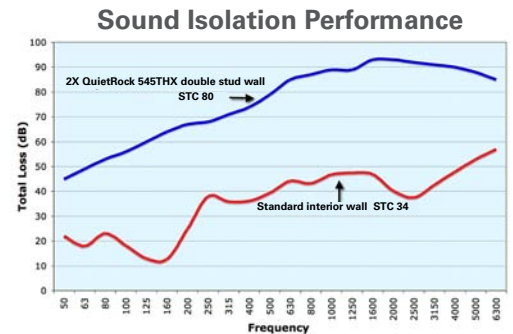
### STC Comparison\*

5/8" gypsum	34
Cinderblock	38
Soundboard	42
Mass loaded vinyl	43
<b>QuietRock 545THX</b>	<b>56-80</b>

\*in standard wood construction

### Product Specifications

<b>Model:</b>	<b>QuietRock 545THX</b>
<b>Thickness:</b>	1-3/8"
<b>Tolerance:</b>	Min - 1.300"; Max - 1.450"
<b>Weight:</b>	5.4 lbs/ft <sup>2</sup>
<b>STC-rated:</b>	56-80
<b>Permeability:</b>	0
<b>R value:</b>	0.88



Model	Description	Thickness	STC	Fire Rating	Features	Applications
510	Solid performance with lowest cost - great value	1/2"	49-68	Not rated	Lowest cost, score/snap/hang, lightest weight, no metal,	Remodeling and upgrades
525	Fire-rated, score and snap	5/8"	51-72	CLASSIFIED UL US (expected, early 2007)	Score/snap/hang, direct soundproof replacement for Type X, no metal	Multifamily, home theaters, hotels, hospitals, commercial
530	Higher performance for retrofits plus shear resistance	5/8"	52-74	CLASSIFIED UL US	Shear/impact-resistant, mold-resistant (optional), pre-primed (optional), penetration	Multifamily, commercial, hospitals, hotels, schools, high-end home theaters, hallways
530RF	Adds RF shielding	5/8"	52-74	CLASSIFIED UL US	Designed for RF and noise shielding	SCIF rooms and medical shielding
545THX	Highest performance	1-3/8"	56-80	2 hours (estimated)	The only THX™ certified drywall, superior sound isolation, even at 50 Hz	High-end home theaters, commercial theaters, studios

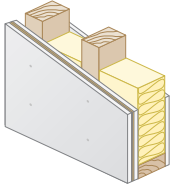
\*For volume purchases. See your local dealer for details.  
STCs shown are on 24" wood studs.

### Applications

- Home theaters
- Commercial theaters
- Recording studios
- Government
- Offices
- Conference rooms

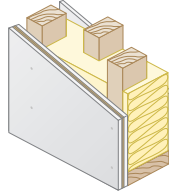
## Lowest-Cost Solutions in the Market

**Lowest Cost Wall**  
QuietRock on one side



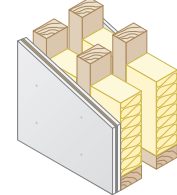
STC: 56

**Staggered Stud Wall**  
QuietRock on one side



STC: 65

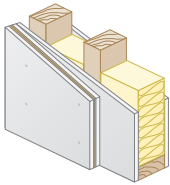
**Double Stud Wall**  
QuietRock on one side



STC: 70

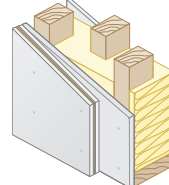
## Retrofit and Remodeling

**Single Stud Wall**  
QuietRock on one side  
of existing drywall



STC: 58

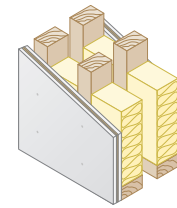
**Staggered Stud Wall**  
QuietRock on one side  
of existing drywall



STC: 65

## High Performance

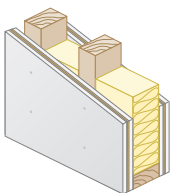
**Double Stud Wall**  
QuietRock on both sides



STC: 75

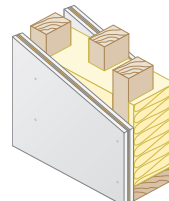
## 2 Hour Fire Walls

**Single Stud Wall**  
QuietRock on both sides



STC: 60

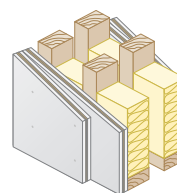
**Staggered Stud Wall**  
QuietRock on both sides



STC: 68

## High Performance

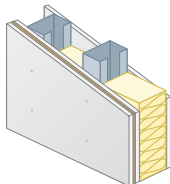
**Double Stud Wall**  
Double layer of QuietRock  
on both sides



STC: 80

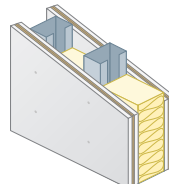
## Steel - Single layer assemblies with fire ratings and noise reduction

**Lowest Cost Wall**  
QuietRock on one side



STC: 58

**Single Stud Wall**  
QuietRock on both sides



STC: 62

## Applications

- Home theaters
- Commercial theaters
- Recording studios
- Government
- Offices
- Conference rooms

STCs shown are on 24" wood studs.