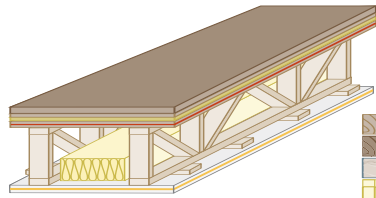


SUGGESTED FLOOR ASSEMBLIES

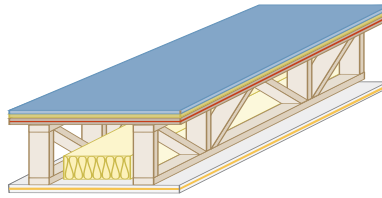
Hardwood Floor Design A
QuietRock, QuietWood, QuietFoam



STC:58 IIC:51



Carpet Floor Design B
QuietRock, QuietWood, carpet

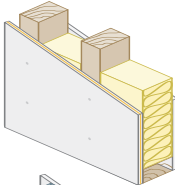


STC:53 IIC:74

NEW CONSTRUCTION

Lowest Cost Wall
QuietRock on one side

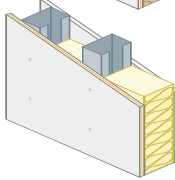
Standard Drywall
STC: 34



QR-525 Relief
STC: 51 Fire: 1 Hr

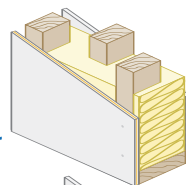
QR-530 Serenity
STC: 52 Fire: 1 Hr

QR-545 Solitude
STC: 56



Staggered Stud Wall
QuietRock on one side

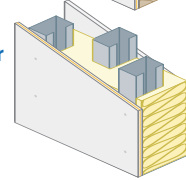
Standard Drywall
STC: 47



QR-525 Relief
STC: 56 Fire: 1 Hr

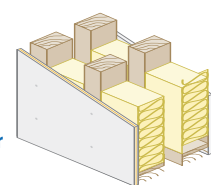
QR-530 Serenity
STC: 58 Fire: 1 Hr

QR-545 Solitude
STC: 65



Double Stud Wall
QuietRock on one side

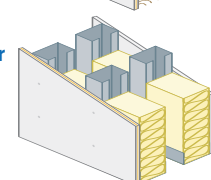
Standard Drywall
STC: 56



QR-525 Relief
STC: 61 Fire: 1 Hr

QR-530 Serenity
STC: 63 Fire: 1 Hr

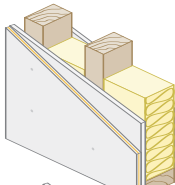
QR-545 Solitude
STC: 70



REHAB, RENOVATION, REMEDIATION & REMODEL

Single Stud Wall
QuietRock on one side of existing drywall

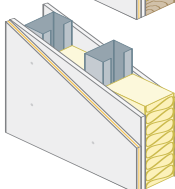
Standard Drywall
STC: 36



QR-525 Relief
STC: 49 Fire: 1 Hr

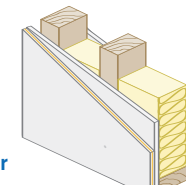
QR-530 Serenity
STC: 53 Fire: 1 Hr

QR-545 Solitude
STC: 58



Single Stud Wall
QuietRock over all existing drywall

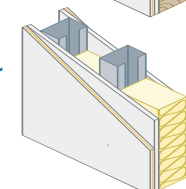
Standard Drywall
STC: 38



QR-525 Relief
STC: 54 Fire: 1 Hr

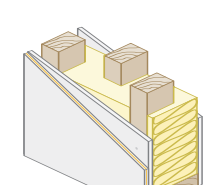
QR-530 Serenity
STC: 56 Fire: 1 Hr

QR-545 Solitude
STC: 62



Staggered Stud Wall
QuietRock on one side of existing drywall

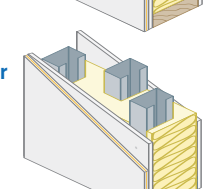
Standard Drywall
STC: 52



QR-525 Relief
STC: 57 Fire: 1 Hr

QR-530 Serenity
STC: 59 Fire: 1 Hr

QR-545 Solitude
STC: 66



Revised as per QS 14/09/06

HIGH PERFORMANCE

Virtual Double Wall/Single Stud Wall

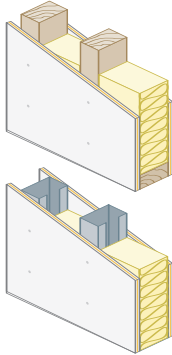
QuietRock on both sides

Standard Drywall
STC: 34

QR-525 Relief
STC: 53 Fire: 1 Hr

QR-530 Serenity
STC: 54 Fire: 1 Hr

QR-545 Solitude
STC: 60



Staggered Demising Wall

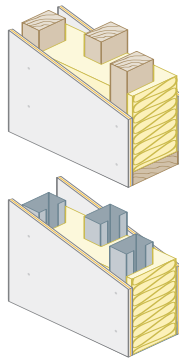
QuietRock on both sides

Standard Drywall
STC: 52

QR-525 Relief
STC: 57 Fire: 1 Hr

QR-530 Serenity
STC: 60 Fire: 1 Hr

QR-545 Solitude
STC: 68



Double Demising Wall

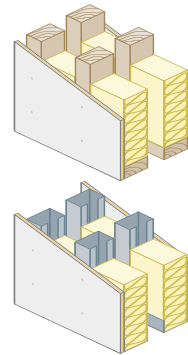
QuietRock on both sides

Standard Drywall
STC: 56

QR-525 Relief
STC: 65 Fire: 1 Hr

QR-530 Serenity
STC: 66 Fire: 1 Hr

QR-545 Solitude
STC: 75



EXTREME PERFORMANCE

Single Stud Wall

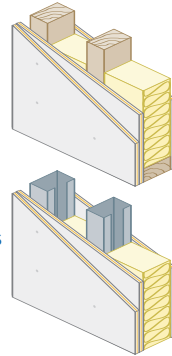
Three layers of QuietRock

Standard Drywall
STC: 38

QR-525 Relief
STC: 53 Fire: 2 Hrs

QR-530 Serenity
STC: 57 Fire: 2 Hrs

QR-545 Solitude
STC: 64



Staggered Demising Wall

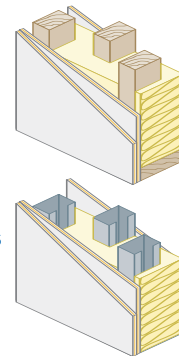
Three layers of QuietRock

Standard Drywall
STC: 52

QR-525 Relief
STC: 61 Fire: 2 Hrs

QR-530 Serenity
STC: 64 Fire: 2 Hrs

QR-545 Solitude
STC: 68



Double Stud Wall

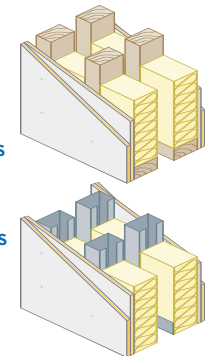
Double layer of QuietRock on both sides

Standard Drywall
STC: 66

QR-525 Relief
STC: 72 Fire: 2 Hrs

QR-530 Serenity
STC: 74 Fire: 2 Hrs

QR-545 Solitude
STC: 80



2 HOUR FIRE WALLS

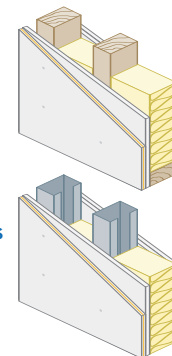
2 Hour Fire Double Wall

QuietRock on one side,
Two layers gypsum on one side

Standard Drywall
STC: 38

QR-525 Relief
STC: 54 Fire: 2 Hrs

QR-530 Serenity
STC: 55 Fire: 2 Hrs



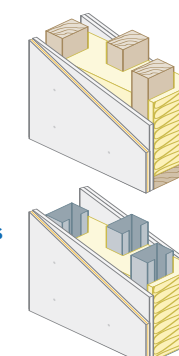
2 Hour Fire Staggered Demising Wall

QuietRock on one side,
Two layers gypsum on one side

Standard Drywall
STC: 56

QR-525 Relief
STC: 59 Fire: 2 Hrs

QR-530 Serenity
STC: 60 Fire: 2 Hrs



2 Hour Fire Demising Wall

QuietRock on one side,
Two layers gypsum on one side

Standard Drywall
STC: 66

QR-525 Relief
STC: 70 Fire: 2 Hrs

QR-530 Serenity
STC: 72 Fire: 2 Hrs

