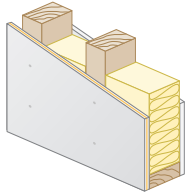




QuietRock® 510

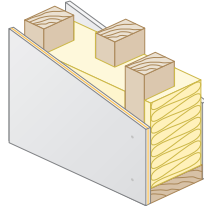
Lowest-Cost Solutions in the Market

Lowest Cost Wall
QuietRock on one side



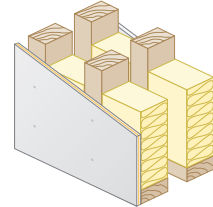
STC: 49

Staggered Stud Wall
QuietRock on one side



STC: 54

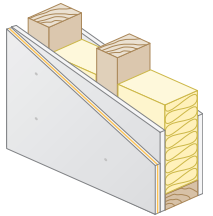
Double Stud Wall
QuietRock on one side



STC: 60

Retrofit and Remodeling

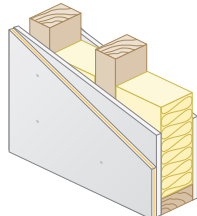
Single Stud Wall
QuietRock on one side of existing drywall



*UL Design #:
U301, U305,
U309

STC: 47

Single Stud Wall
QuietRock on both sides of existing drywall

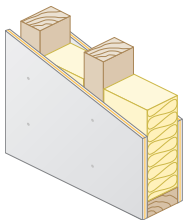


*UL Design #:
U301, U305,
U309

STC: 54

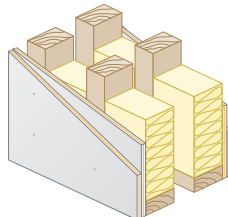
High Performance

Single Stud Wall
QuietRock on both sides



STC: 52

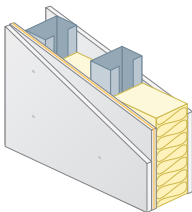
Double Stud Wall
Double layer of QuietRock on both sides



STC: 68

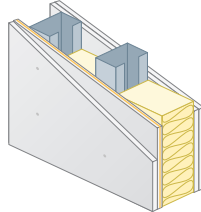
Steel

Single Stud Wall
QuietRock under one side of Type X drywall



STC: 54 - Fire: 1 Hour

Single Stud Wall
QuietRock under Type X one side
2x Type X other side



STC: 56 - Fire: 1 Hour

Applications

- Bedrooms
- Music rooms
- Media rooms
- Basements
- Recording studios
- Multi-family
- Party walls
- Schools
- Hotels

*See Acoustic and Fire Assemblies document for more information.

The information contained in this document is for general information purposes only. Features and specifications are subject to change. The diagrams and stated STC ratings listed are intended to serve as a guide. Construction practices have an influence on final STC ratings. Quiet Solution cannot guarantee actual STC ratings. Flanking sound patterns, the integrity of the wall, and floor and ceiling construction are important factors in effective sound control.

STCs shown are on 24" wood studs.